



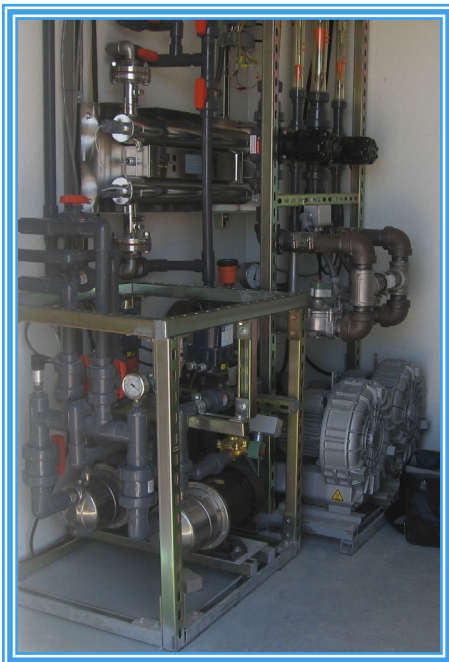
## Product Data Sheet: RWT MBR Model QuadPod 4.0

### SUMMARY:

The **RWT MBR Model QuadPod 4.0** membrane bioreactor (MBR) system incorporates a proprietary assembly and **NSF/ANSI** approved membrane modules for use in many low and high strength **decentralized wastewater** treatment applications. Each unit is pre-engineered and packaged with **PLUG & PLAY** easy to install components including blowers, pumps, and controls, thus minimizing installation labor and materials.

### FEATURES:

- ◆ Fully integrated, automatic treatment process with flat sheet membrane technology, mechanical systems, and electrical controls
- ◆ PVC and 304SS construction for long life
- ◆ 304SS Camlok connectors for easy removal
- ◆ 304SS membrane case with integrated aeration and membrane aeration diffusers
- ◆ Simplex aeration blower, effluent pump, and control panel assembled in a prefabricated weatherproof equipment enclosure.
- ◆ Simplex static influent screen capable of screening raw wastewater solids to less than 1/8"



### OPTIONS:

- ☑ Duplex screens, pumps, blowers, disinfection systems, and controls
- ☑ Cellular or web-based remote system monitoring and control system
- ☑ Influent flow equalization pumps and controls
- ☑ Tablet chlorinators and disinfection tablets
- ☑ Ultraviolet (UV) disinfection systems and controls
- ☑ Odor control systems
- ☑ Total phosphorus removal systems and controls
- ☑ Shelf spares for key mechanical and electrical components
- ☑ System upgrades for extreme environmental conditions, elevations, and topography
- ☑ Pretreatment and process tanks
- ☑ Influent and effluent lift stations
- ☑ Effluent discharge and dispersal systems
- ☑ Onsite system installation, commissioning, and support services



## DECENTRALIZED APPLICATIONS:

Travel Centers	Amusement Parks	Commercial Buildings	Apartment Buildings
Gas Stations	Casinos	Emergency Management	Cluster Housing
Convenience Stores	Golf Courses	Industrial Sites	Hospitals
Rest Areas	Malls	Mining Man Camps	Hotels
Visitor Centers	RV Parks	Office Buildings	Schools
Parks and Recreation	Seasonal Camps	Oil & Gas Man Camps	Small Communities

## ADVANTAGES:

- Smaller footprint than conventional aerobic, settling, and effluent filtration technologies
- Reduced sludge production and hauling frequency and costs
- Customizable controls compatible with all types of pumps and blowers
- Simple installation with skid-mounted, pre-plumbed, pre-wired equipment and controls
- Reliable automatic operation
- Consistently produces high quality effluent

## SPECIFICATIONS:

❖ MBR Unit Dimensions	48"W x 48"L x 60"H
❖ MBR Unit Weight	750 lbs
❖ Power Supply	240VAC/1ph/60Hz
❖ Power Panel Breaker	100-Amp
❖ Equipment Enclosure	6'W x 6'L x 7"H
❖ Design Flow	4,000 gpd
❖ Design Influent BOD	1,000 mg/L
❖ Wastewater Temp	50°F – 80°F
❖ pH Range	6.0 – 9.0

